



ZANESVILLE - MUSKINGUM COUNTY
PORT AUTHORITY
www.zmcpport.com

The Village of
Roseville

TURNKEY OPPORTUNITY.



CORNER THE MARKET WITH YOUR OWN MARKET!

Newly constructed commercial property with potential to be utilized as a grocery store, ice cream parlor, and eatery with patio dining and dine-in services. This property sits on 0.515 acres (2 parcels) owned by the Village of Roseville, Ohio. The metal building comes with a commercial fire hood, touchless sinks, automatic doors, walk-up window, some kitchen equipment available, restrooms, office with floor safe, storage, delivery door and platform in rear. An access road from the Village's Main Street connects directly to the property, with parking spaces available to accommodate retail activities in the business district. Estimated 54 parking spaces available on the property for cars, including 3 ADA spaces.

Sale: \$775,000 or Lease: \$2,000/mo.





**BRAND NEW
CONSTRUCTION**

Customize to fit your needs without the added cost of demo or recently increased material expense.



**GREAT
LOCATION**

This is the ONLY commercial space with similar features and a supportive population within 11 miles.



**5,000+
SQUARE FEET**

Current open floor plan with limitless possibilities and plenty of space to make it yours.

**To View More Details, Click [HERE](#) for a PDF Flyer and
SCAN the QR CODE**



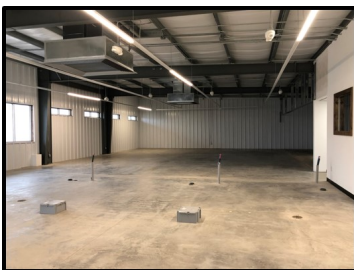
View from the main entrance, straight ahead is the commercial kitchen area.



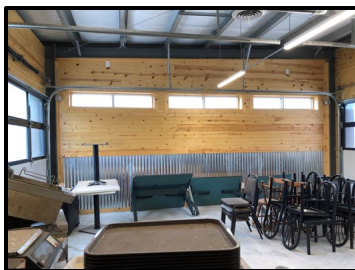
Walk-up window/dine-in area, with room for outside seating, located to the right of main entrance.



Restroom, completely finished, ADA compliant



View of the interior, from the entrance/kitchen area.



Completely finished dining area, two roll up doors for warm weather, connected to main building via interior walk-up window or doorway.



View of the interior, looking toward the front doors.

**If you have questions or would like to schedule a viewing
call or email:**

Jeremy VanMeter
Village of Roseville,
Fiscal Officer
740-697-7323 x2
fiscal-officer@rosevilleoh.com

Click [HERE](#) to access a detailed property listing

